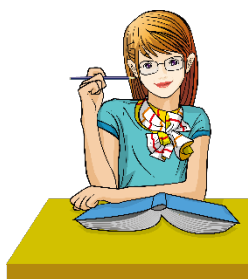


For International Students

Japanese Language Private Lesson



RESEARCH

Papers
Presentations



JOB HUNTING

Entry sheets
Interviews



SCHOLARSHIP

Application forms
Essays

I'm not sure
if this is
correct.



I want someone to
check my Japanese !



Get advice from the experienced instructor of Japanese!

★ Please make a reservation by e-mail in advance. ★

Eligible for enrollment	<ul style="list-style-type: none"> • Students and researchers in Graduate School of Engineering as well as Graduate School of Information Science and Technology. • In case that we have more applications than the available sessions on the day, the priority will be given to Students of the departments belonging to the IME Graduate Program.
Period	September 26th, 2017 – January 9th, 2018
Date and time	Every Thursday one 60-minute session ①18:40-19:40 ②19:40-20:40
Prace	Hongo Campus, School of Engineering, Bldg.8, 1F Room123
Application	Please make a reservation for each lesson by e-mail in advance. address : japanese@ime.t.u-tokyo.ac.jp
Notes	Depending on the contents and volume of the material, you may need to have several sessions. You can use this session any number of times.